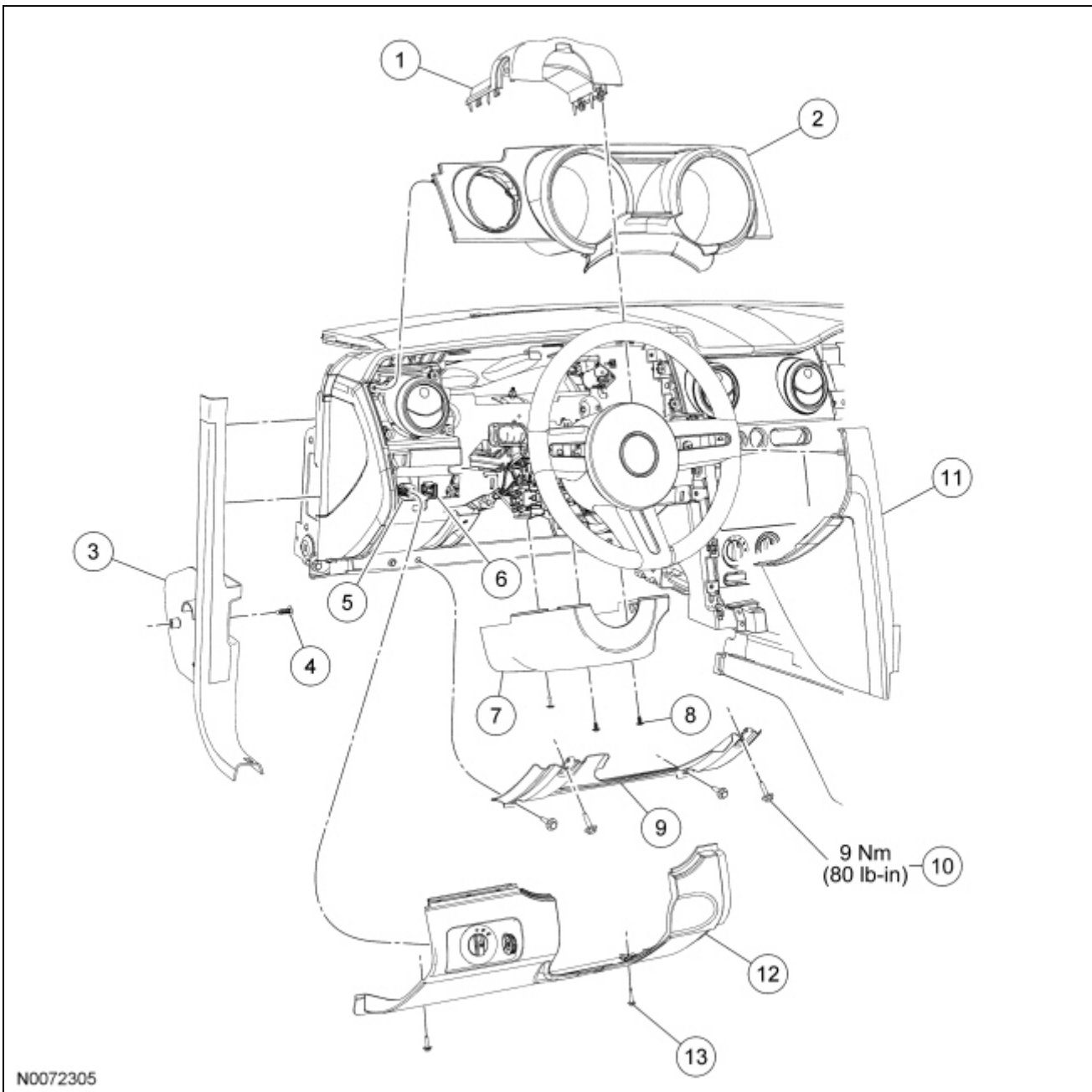


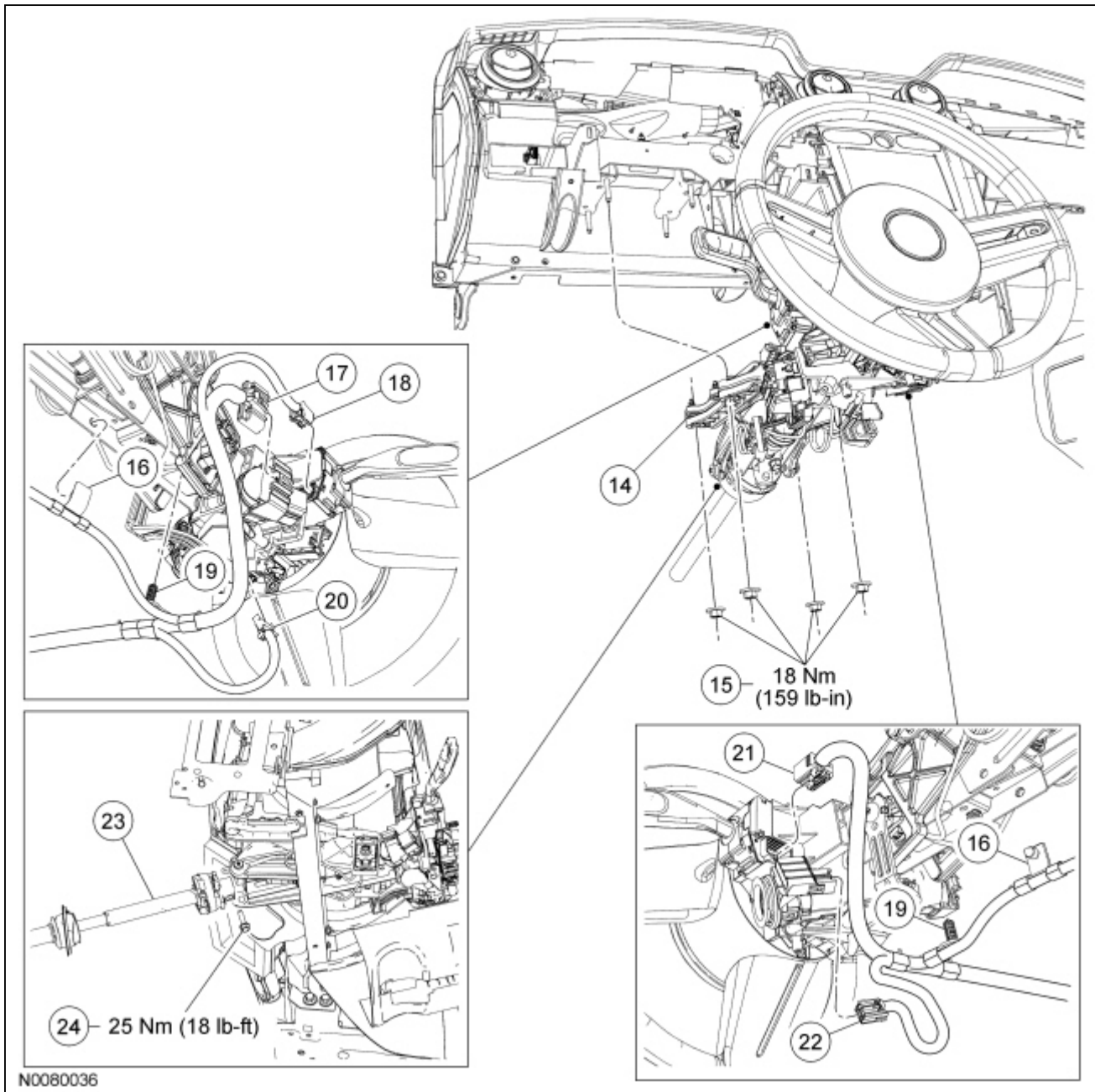
Steering Column



N0072305

Item	Part Number	Description
1	3530A	Upper steering column shroud
2	044D70	Instrument cluster finish panel
3	A30A64	LH A-pillar lower trim panel
4	W505156	LH A-pillar lower trim panel screw
5	—	Headlamp switch electrical connector (part of 14401)
6	—	Courtesy lamp switch electrical connector (part of 14401)
7	3530B	Lower steering column shroud
8	W707281	Lower steering column shroud screw (2 required)

9	04502	Steering column opening cover reinforcement
10	W505424	Steering column opening cover reinforcement screw (4 required)
11	04608	Left center stack wing
12	04459	Steering column opening cover
13	W505156	Steering column opening cover screw (2 required)



Item	Part Number	Description
14	3C529	Steering column
15	W705047	Steering column nuts (4 required)
16	—	Electrical harness retainer (part of 14401)
17	—	Ignition switch electrical connector (part of 14401)
18	—	Multifunction switch electrical connector (turn signal/hazard flasher) (part of 14401)

19	—	Electrical harness retainer (part of 14401)
20	—	Clockspring electrical connector (part of 14401)
21	—	Multifunction switch electrical connector (windshield wiper/washer) (part of 14401)
22	—	Passive Anti-Theft System (PATS) electrical connector (part of 14401)
23	3E751	Steering column shaft
24	W704980	Steering column shaft-to-steering column bolt

Removal and Installation

1. Depower the Supplemental Restraint System (SRS). For additional information, refer to [Section 501-20B](#).
2. Place the steering wheel in the straight-ahead position and remove the ignition key.
3. **NOTE:** The instrument cluster finish panel is held in place with retaining clips that are attached to the bezel.

Remove the instrument cluster finish panel.

4. Remove the floor console finish panel. For additional information, refer to [Section 501-12](#).
5. Remove the LH A-pillar lower trim panel.
6. Remove the left center stack wing.
7. Remove the 2 screws and the steering column opening cover.
 - Disconnect the headlamp and courtesy light switch electrical connectors.
8. Remove the 4 bolts and the steering column opening cover reinforcement.
 - To install, tighten to 9 Nm (80 lb-in).
9. Remove the upper steering column shroud by carefully pressing the sides inward.
10. Remove the 3 screws and the lower steering column shroud.
11. Disconnect the electrical harness pin-type retainers.
12. Disconnect the following electrical connectors:
 - Ignition switch
 - Multifunction switch (turn signal/hazard flasher)
 - Clockspring
 - Multifunction switch (windshield wiper/washer)
 - [PATS](#)
13. **NOTICE:** Do not allow the steering column to rotate while the steering column shaft is disconnected or damage to the clockspring may result. If there is evidence that the steering column shaft has rotated the clockspring must be removed and recentered. For additional information, refer to [Section 501-20B](#).

Remove and discard the steering column shaft-to-steering column bolt and disconnect the shaft from the steering column.

- To install, tighten the new bolt to 25 Nm (18 lb-ft).

14. Remove the 4 nuts and the steering column.
 - To install, tighten to 18 Nm (159 lb-in).
15. To install, reverse the removal procedure.

